

EN

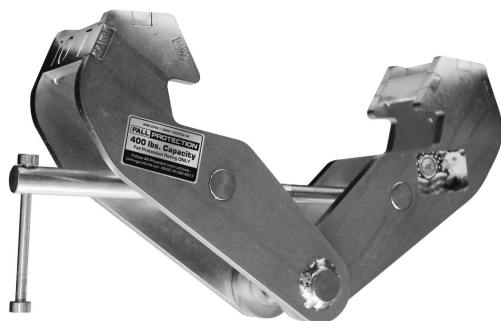
OPERATOR'S MANUAL



BEAM CLAMP FALL PROTECTION SERIES

100% made in the USA.

**1 TON
THROUGH
10 TON
MATERIAL
HANDLING**



**400 lbs. combined
user and tools
fall protection.**

FALL PROTECTION

**This product meets or exceeds
OSHA 1926 Subpart M, OSHA 1910.140
ASME Z359.1, and ASME A10.32-2012
standards for fall protection.**



P.O. Box 845, Winona, MN 55987

Distributed by

Engineered Fall Protection

sales@engineeredfallprotection.com

www.engineeredfallprotection.com

Tel: (314) 492-4422

Table of Contents

Pg.3 Warranty

Pg.4 Introduction / Product Applications and Limitations

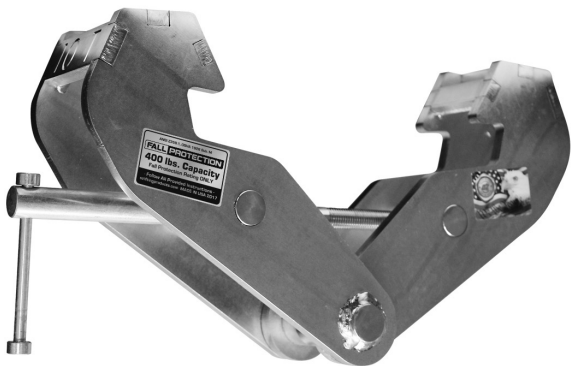
Pg.5 Product Applications and Limitations

Pg.6 Components and Specifications

Pg.7 Installation / Maintenance, Cleaning, & Storage

Pg.8 Inspection / Safety Warnings

Pg.9 Beam Clamp Inspection Log



FALL PROTECTION

Warranty

OZ Lifting Products LLC® guarantees this product to be free of defects in materials and workmanship for ten years from the date of shipment.

This warranty does not apply to products that show signs of misuse, overloading, alteration, improper maintenance or negligence. The normal wear and tear of moving parts is excluded from the warranty. Moving parts are defined as brake discs, wire rope and other wear components that are subject to use conditions. This warranty does not cover any costs related to removal of this product, lost time, or any other incidental or consequential damages/costs resulting from the claimed defects.

If this product fails during the first ten years of operating due to defective materials or workmanship, it will be repaired or replaced at the discretion of OZ Lifting Products LLC®. Any product subject to a warranty claim must be returned, prepaid, to an authorized OZ Lifting Products LLC® warranty depot along with proof of purchase. Upon repair, the product will be returned to the customer free of charge. If no defect is found, the customer will be responsible for return shipping costs. The product's warranty will be effective for the remainder of the original warranty period (ten years from shipment date).

OZ Lifting Products LLC® will not be held liable for the following arising from the use of this product: injuries to persons or property, death, incidental, consequential, or contingent damages, whether negligent or deliberate. It is the sole responsibility of the owner to install and operate the product properly and safely.

This is OZ Lifting Products LLC®'s only written warranty. This warranty is in lieu of all other warranties implied by law such as merchantability and fitness. The sale of products from OZ Lifting Products LLC® under any other warranty or guarantee, expressed or implied, is not authorized.

NOTE: OZ Lifting Products LLC® has the right to alter the design of or discontinue the production of any product without prior notice.

For more information please contact:



P.O. Box 845, Winona, MN 55987

Distributed by Engineered Fall Protection

sales@engineeredfallprotection.com

www.engineeredfallprotection.com

Tel: (314) 492-4422

Introduction

Thank you for purchasing your OZ Lifting Products LLC® **Fall Protection Series Beam Clamp**. The information in this manual should be used only for the **Beam Clamp**. This manual contains general instructions dealing with the normal installation, operation, and maintenance of the product described herein only. This manual is not intended to provide instruction on the usage of any other component of your personal fall arrest system. It is the user's responsibility to ensure that all components of the personal fall arrest system are suitable for use and are used correctly. The information provided should not be expected to prepare the user for all possible circumstances.

This product should not be installed, operated, or maintained by any person who has not read all the contents of these instructions. Failure to read and comply with these instructions, warnings, or limitations noted might result in bodily injury, death, or property damage. Contact the distributor for further explanation if information is not fully understood.

It is the responsibility of the owner/user to install, test, maintain, and operate these products in accordance with OSHA regulations, other federal, state, and local regulations.



**ONLY TRAINED AND QUALIFIED PERSONNEL SHALL
OPERATE AND MAINTAIN THIS EQUIPMENT.**

This product meets or exceeds OSHA 1926 Subpart M, OSHA 1910.140, ASME Z359.1, and ASME A10.32-2012 standards for fall protection.

Product Applications and Limitations

This **Fall Protection Series Beam Clamp** may be used to support one personal fall arrest system. Any structure upon which this beam clamp is installed must be able to withstand loads of at least 5,000 lbs in any direction fall arrest forces may occur. This clamp is designed to withstand vertical fall arresting forces. Users should try to remain in line with the clamp as much as possible. Every precaution must be taken to avoid swing falls. These can cause dangerous situations that could overcome the personal fall arrest system and may cause serious injury. In the event of the clamp being subjected to a fall arrest, it must be taken out of service and pass an inspection by a qualified person before it can be returned to service.

Prior to use, confirm that there is sufficient clearance below the anchorage connector to arrest a fall before the user strikes the ground or an obstruction. Start all fall clearance calculations from the anchor point on the beam clamp, not the beam itself, as this distance may change due to different beam width. It is necessary to account for the following, and all other applicable factors, when calculating fall clearance:

MINIMUM three-foot safety factor, deceleration distance, user height, and length of lanyard/SRL.

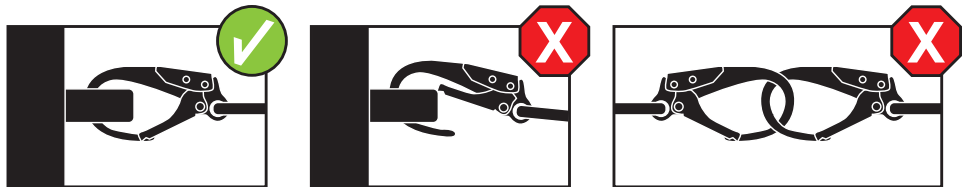
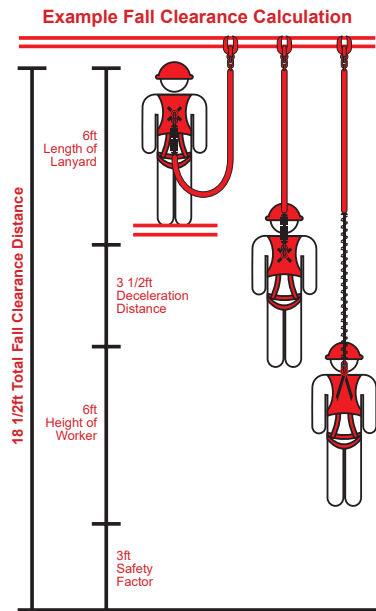


Ensure proper fall clearance is present for specific equipment being used.

NOTE: The maximum allowable free fall distance for lanyards must not exceed six feet. No free fall allowed for non-LE SRLs. Class A SRLs must arrest falls within 24 inches; Class B SRLs must arrest falls within 54 inches.

When Attaching Personal Fall Arrest System Components to Fall Protection Series Beam Clamp:

- Ensure the connector attached to the beam clamp is suitable and fully compatible with the beam clamp in use. It must be large enough that it completely encircles the bail and locks in that position.
- Ensure the connector is not designed/oriented in such a way as to cause excess load to be applied to the gate of the connector.
- Avoid any situation that could cause the connector to open unexpectedly, including roll-out.
- Do not use improper connectors or misuse proper connectors as this could cause serious injury.

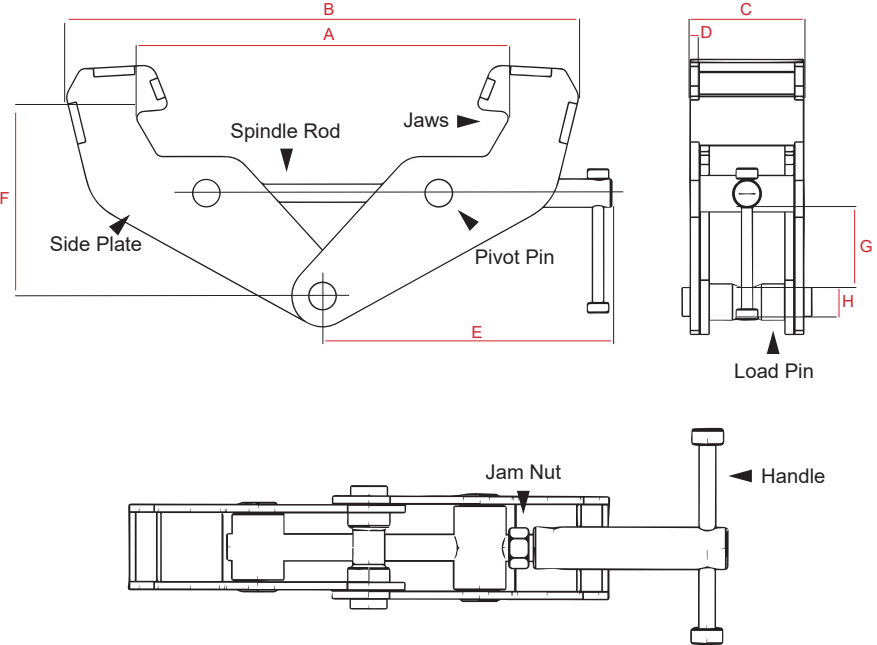


Material Handling Usage

Any usage of the clamp for material handling purposes must be treated in the same way as a fall arrest. After any type of material handling usage, the clamp must be removed from service and pass an inspection by a qualified person **prior to returning it to service as part of a personal fall arrest system.**



Components and Specifications



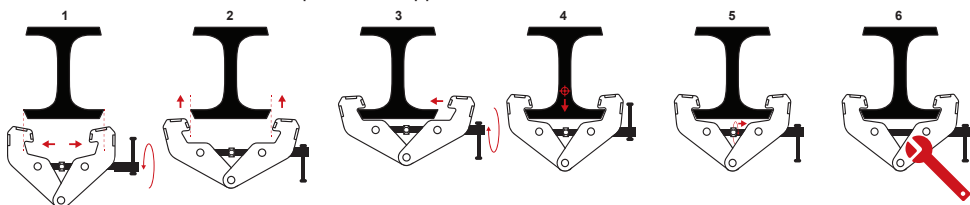
Specification

	OZ1BCA-MR	OZ2BCA-MR	OZ3BCA-MR	OZ5BCA-MR	OZ10BCA-MR
Material Handling Load	2,000 lbs.	4,000 lbs.	6,000 lbs.	10,000 lbs.	20,000 lbs.
Fall Protection*	400 lbs.	400 lbs.	400 lbs.	400 lbs.	400 lbs.
A	3" - 8"	3" - 8"	3.5" - 13"	3.5" - 13"	3.5" - 13"
B	14.75"	14.75"	20.5"	20.5"	22"
C	2.51"	2.91"	3.94"	4.41"	4.72"
D	0.9"	0.9"	1.5"	1.5"	1.6"
E	9.5"	9.5"	11"	11"	11.5"
F	4.75" - 5.75"	4.75" - 5.75"	7.5" - 9"	7.5" - 9"	5.5" - 9.375"
G	1.75"	1.75"	2.5"	2.5"	4"
H	.75"	.875"	.975"	1.125"	1.625"
Net Weight	9 lbs.	11 lbs.	22 lbs.	26 lbs.	39 lbs.

*User and tools combined.

Installation

Check for damage during shipment prior to installation. Do not install or use a damaged product. Be sure to maintain records of all accompanying product information. Contact your OZ Lifting Products LLC® dealer if there are any problems or questions. Read and comply with all instructions and warnings furnished with or attached to the product as applicable.



1. Open the clamp jaws by turning spindle handle counter clockwise.
2. Center the beam clamp on the girder.
3. Turn the spindle handle clockwise to close the clamp jaws.
4. Ensure that the jaws are tight enough that the beam clamp cannot slide on the beam.
5. Tighten the jam nut finger tight on the spindle so that it contacts the threaded pivot pin.
6. Tighten the jam nut an additional 1/8 to 1/4 turn with a wrench or other suitable tool.

NOTE: Please refer to the manuals of all other components of your personal fall arrest system to ensure those components are being used properly and are in compliance with all applicable standards. The **Beam Clamp** is not intended to slide on the structure it is installed upon.

Warning: Beam Clamp operators should read and fully comprehend this entire manual and all warnings on the clamp before use. If this manual is not read and followed completely, injuries may occur. Proper use of this beam clamp is only part of the safe operation of your personal fall arrest system. Ensure that all components of your personal fall arrest system are being used correctly and are in good condition.

All Persons MUST:

Be trained in proper operation and in dealing with potential malfunctions of personal fall arrest systems. Abstain from use of alcohol, medications, or drugs while operating. Avoid operation while tired or distracted. Avoid operation if they have a history of seizures or other medical issues that may interfere with operation.

NOTE: Prior to operation, ensure that the **Beam Clamp** is in proper working condition and maintenance records are up to date. Please refer to the manual for your specific fall protection device for proper operation.

Maintenance, Cleaning and Storage

Ensure that the work area is free of debris, rot, rust, decay, cracking, and hazardous materials. A stable work area is required for use.

Dirt, corrosives, and contaminants should be cleaned with water as necessary. Mild soap can be used if necessary, though a thorough rinse and dry is mandatory. Lightly lubricate all moving parts after cleaning. Never clean the **Beam Clamp** with corrosive substances.

Always store your Beam Clamp where it will not be subjected to heat, light, excessive moisture, chemicals, or other elements.

Inspection

In order to maintain quality operation of the product, a regular inspection schedule should be followed by each operator. All inspections should be reported and maintained in a dated record log located at the end of this manual. You will notice that the first entry has been made as the clamp passed an inspection prior to leaving OZ Lifting Products headquarters. These records should be available to all personnel involved with the product and should be made available to OZ Lifting Products LLC® when a warranty issue is in question.

Operators should inspect clamps before each usage. Each clamp must pass an inspection by a qualified person every six months to remain in service. Inspect for wear, damage, cuts, cracks, corrosion, impact damage, pits, burrs, rough surfaces, sharp edges, rust, paint build-up, excessive heating, alteration, and missing or illegible labels. During any inspection, also test that the clamp functions smoothly and that the spindle threads are in good condition. Ensure that the jam nut is present on the threaded spindle rod. If any problems are observed, the **Beam Clamp** should be placed out of service until it can be repaired. Use only OZ Lifting Products LLC® for replacement parts. The **Beam Clamp** should be taken annually to an authorized repair center for professional inspection.

Worker Classifications

Designated Person - The person who is selected or assigned as being competent to perform specific duties.

Qualified Person - The person that—by possession of a recognized degree or certificate of professional standing, or through extensive knowledge, training, and experience—has successfully demonstrated they are able to resolve problems relating to the subject matter and work.

Safety Warnings

Beam Clamp (Personal Fall Protection Usage)

- Do Not** use any clamp that has not passed inspection by a qualified person within the past six months.
- Do Not** alter or misuse equipment.
- Do Not** use in a non-compliant manner.
- Do Not** operate in a workplace that has not been assessed for proper use.
- Do Not** purchase used personal fall arrest systems.
- Do Not** use non-compliant harnesses and connectors.
- Do Not** operate without a rescue procedure in place.
- Do Not** use to hang, lift, support, or to hoist tools or equipment.
- Do Not** use without records of proper inspection.
- Do Not** use beam clamp as an anchor point for more than one personal fall arrest system.

Beam Clamp (Material Handling Usage)

- Do Not** lift more than the designated load range.
- Do Not** lift people or lift loads over people.
- Do Not** operate a damaged or malfunctioning product.
- Do Not** remove, deface, or cover warning labels.
- Do Not** operate until personnel are warned and cleared from the area.
- Do Not** use if load is not suspended vertically.
- Do Not** use beam clamp without locking firmly in place.
- Do Not** use beam clamp as a welding ground.
- Do Not** add lengthening pieces to the beam clamp lever.
- Do Not** weld on the lifted load.
- Do Not** open the beam clamp when it is holding a load.
- Do Not** use beam clamps in corrosive environments.
- Do Not** use connections between the clamp and load.
- Do Not** allow the load to swing.



WARNING: Failure to read and comply with these safety warnings may result in a hazardous situation that could lead to death, serious injury, or property damage.

**For use with OZ Lifting Products LLC®
Fall Protection Beam Clamps only.**



Model # _____

Serial #

Date	Excessive Wear (Y/N)	Excessive Corrosion (Y/N)	Bent Handle (Y/N)	Missing/Illegible Decals (Y/N)	Bail Wear (Y/N)	Other Concerns (Y/N)	Return to Service (Y/N)

Date _____

Notes

Inspected by

[illegible]

Additional pages available

EN

OPERATOR'S MANUAL



PUSH BEAM TROLLEY FALL PROTECTION SERIES

100% made in the USA.

**0.5 TON
THROUGH
1 TON**

**400 lbs. combined
user and tools
fall protection.**



FALL PROTECTION

**This product meets or exceeds OSHA 1926 Subpart M, OSHA 1910,
ASME Z359.1-2007, and ASME A10.32-2012 standards for fall protection.**



P.O. Box 845, Winona, MN 55987

Distributed by

Engineered Fall Protection

sales@engineeredfallprotection.com

www.engineeredfallprotection.com

Tel: (314) 492-4422

Table of Contents

Pg.3 Warranty

Pg.4 Introduction / Product Applications and Limitations

Pg.5 Product Applications and Limitations

Pg.6 Components and Specifications

Pg.7 Installation / Maintenance, Cleaning, & Storage

Pg.8 Inspection / Safety Warnings

Pg.9 Push Beam Trolley Inspection Log



FALL PROTECTION

Warranty

OZ Lifting Products LLC® guarantees this product to be free of defects in materials and workmanship for ten years from the date of shipment.

This warranty does not apply to products that show signs of misuse, overloading, alteration, improper maintenance or negligence. The normal wear and tear of moving parts is excluded from the warranty. Moving parts are defined as brake discs, wire rope and other wear components that are subject to use conditions. This warranty does not cover any costs related to removal of this product, lost time, or any other incidental or consequential damages/costs resulting from the claimed defects.

If this product fails during the first ten years of operating due to defective materials or workmanship, it will be repaired or replaced at the discretion of OZ Lifting Products LLC®. Any product subject to a warranty claim must be returned, prepaid, to an authorized OZ Lifting Products LLC® warranty depot along with proof of purchase. Upon repair, the product will be returned to the customer free of charge. If no defect is found, the customer will be responsible for return shipping costs. The product's warranty will be effective for the remainder of the original warranty period (ten years from shipment date).

OZ Lifting Products LLC® will not be held liable for the following arising from the use of this product: injuries to persons or property, death, incidental, consequential, or contingent damages, whether negligent or deliberate. It is the sole responsibility of the owner to install and operate the product properly and safely.

This is OZ Lifting Products LLC®'s only written warranty. This warranty is in lieu of all other warranties implied by law such as merchantability and fitness. The sale of products from OZ Lifting Products LLC® under any other warranty or guarantee, expressed or implied, is not authorized.

NOTE: OZ Lifting Products LLC® has the right to alter the design of or discontinue the production of any product without prior notice.

For more information please contact:



P.O. Box 845, Winona, MN 55987

Distributed by Engineered Fall Protection

sales@engineeredfallprotection.com

www.engineeredfallprotection.com

Tel: (314) 492-4422

Introduction

Thank you for purchasing your OZ Lifting Products LLC® **Fall Protection Series Push Beam Trolley**. The information in this manual should be used only for the **Push Beam Trolley**. This manual contains general instructions dealing with the normal installation, operation, and maintenance of the product described herein only. This manual is not intended to provide instruction on the usage of any other component of your personal fall arrest system. It is the user's responsibility to ensure that all components of the personal fall arrest system are suitable for use and are used correctly. The information provided should not be expected to prepare the user for all possible circumstances.

This product should not be installed, operated, or maintained by any person who has not read all the contents of these instructions. Failure to read and comply with these instructions, warnings, or limitations noted might result in bodily injury, death, or property damage. Contact the distributor for further explanation if information is not fully understood.

It is the responsibility of the owner/user to install, test, maintain, and operate these products in accordance with OSHA regulations, other federal, state, and local regulations.



**ONLY TRAINED AND QUALIFIED PERSONNEL SHALL
OPERATE AND MAINTAIN THIS EQUIPMENT.**

This product meets or exceeds OSHA 1926 Subpart M, OSHA 1910, ASME Z359.1-2007, and ASME A10.32- 2012 standards for fall protection.

Product Applications and Limitations

This **Fall Protection Series Push Beam Trolley** may be used to support one personal fall arrest system. Any structure upon which this trolley is installed must be able to withstand loads of at least 5,000 lbs in any direction fall arrest forces may occur. This trolley is designed to withstand vertical fall arresting forces. Users should try to remain in line with the trolley as much as possible. Every precaution must be taken to avoid swing falls. These can cause dangerous situations that could overcome the personal fall arrest system and may cause serious injury. In the event of the trolley being subjected to a fall arrest, it must be taken out of service and pass an inspection by a qualified person before it can be returned to service.

Prior to use, confirm that there is sufficient clearance below the anchorage connector to arrest a fall before the user strikes the ground or an obstruction. Start all fall clearance calculations from the anchor point on the trolley, not the beam itself, as this distance may change due to different beam width. It is necessary to account for the following, and all other applicable factors, when calculating fall clearance:

MINIMUM three-foot safety factor, deceleration distance, user height, and length of lanyard/SRL.

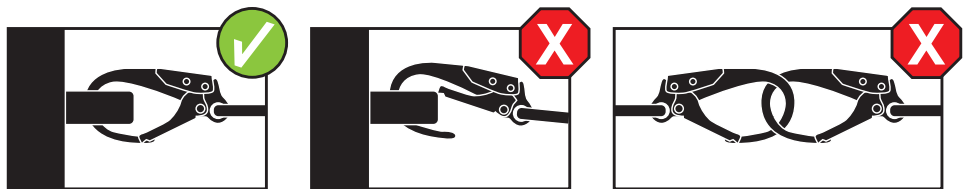
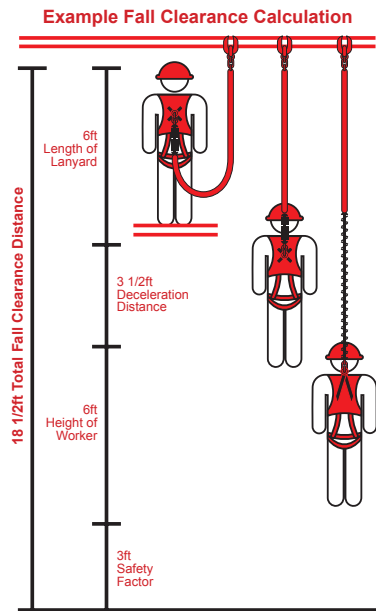


Ensure proper fall clearance is present for specific equipment being used.

NOTE: The maximum allowable free fall distance for lanyards must not exceed six feet. No free fall allowed for non-LE SRLs. Class A SRLs must arrest falls within 24 inches; Class B SRLs must arrest falls within 54 inches.

When Attaching Personal Fall Arrest System Components to Fall Protection Series Push Beam Trolley:

- Ensure the connector attached to the trolley is suitable and fully compatible with the trolley in use. It must be large enough that it completely encircles the bail and locks in that position.
- Ensure the connector is not designed/oriented in such a way as to cause excess load to be applied to the gate of the connector.
- Avoid any situation that could cause the connector to open unexpectedly, including roll-out.
- Do not use improper connectors or misuse proper connectors as this could cause serious injury.

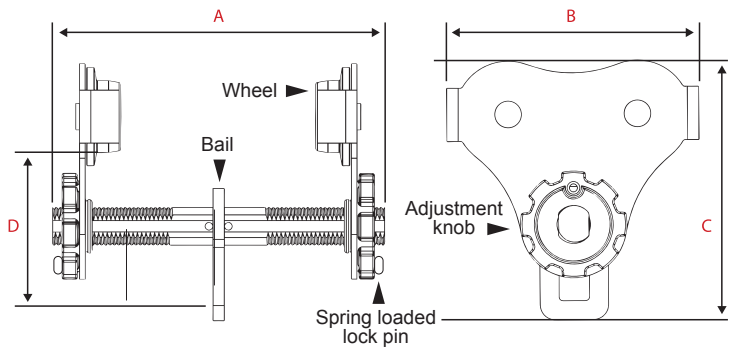


Material Handling Usage

Any usage of the trolley for material handling purposes must be treated in the same way as a fall arrest. After any type of material handling usage, the trolley must be removed from service and pass an inspection by a qualified person prior to returning it to service as part of a personal fall arrest system.



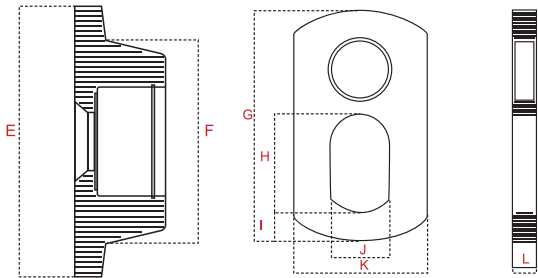
Components and Specifications



Specification

	OZ05PBTA-MR	OZ1PBTA-MR
Material Handling Load	1,000 lbs.	2,000 lbs.
Fall Protection*	400 lbs.	400 lbs.
Adjustable Flange Width	2.75"- 8.00"	2.75"- 8.00"
Minimum Radius Curve	2.75 ft.	3.35 ft.
A	11"	11"
B	8.3"	10.2"
C	8.5"	9.8"
D	5"	5.5"
Net Weight	16 lbs.	26 lbs.

*User and tools combined.

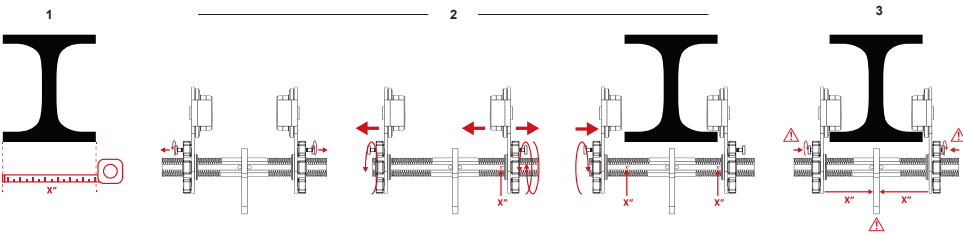


Wheel & Bail Dimensions

	OZ05PBTA-MR	OZ1PBTA-MR
E	3.25"	4.00"
F	2.38"	3.00"
G	4.38"	5.00"
H	1.50"	1.88"
I	0.63"	0.63"
J	1.00"	1.25"
K	2.25"	2.50"
L	0.38"	0.50"

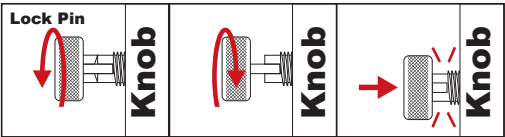
Installation

Check for damage during shipment prior to installation. Do not install or use a damaged product. Be sure to maintain records of all accompanying product information. Contact your OZ Lifting Products LLC® dealer if there are any problems or questions. Read and comply with all instructions and warnings furnished with or attached to the product as applicable.



1. Prior to installation, measure the width of the beam flange.
2. Adjust one side of the trolley to the flange measurement (e.g. If beam measures 6 inches, set the trolley to 6 inches on ruler guide). Open opposite side of trolley to fit over the beam.
NOTE: To adjust trolley into place on beam, pull out spring loaded lock pin on either side and twist 90 degrees. This position allows the adjustment knob to spin freely until desired width is achieved. To lock trolley into place, twist lock pin an additional 90 degrees until it clicks. Then spin adjustment knob counterclockwise to nearest locking position.
3. Once trolley is installed, verify that the bail is centered on the beam by checking for equal measurements on both sides of the ruler guide.
4. Removal of the trolley is the reverse of installation.

WARNING: Ensure that lock pins are fully extended and locked in place prior to operation. Fig.1A



Warning: Beam trolley operators should read and fully comprehend this entire manual and all warnings on the trolley before use. If this manual is not read and followed completely, injuries may occur. Proper use of this beam trolley is only part of the safe operation of your personal fall arrest system. Ensure that all components of your personal fall arrest system are being used correctly and are in good condition.

All Persons MUST: Be trained in proper operation and in dealing with potential malfunctions of personal fall arrest systems. Abstain from use of alcohol, medications, or drugs while operating. Avoid operation while tired or distracted. Avoid operation if they have a history of seizures or other medical issues that may interfere with operation.

NOTE: Prior to operation, ensure that the **Beam Trolley** is in proper working condition and maintenance records are up to date. Please refer to the manual for your specific fall protection device for proper operation.

Maintenance, Cleaning and Storage

Ensure that the work area is free of debris, rot, rust, decay, cracking, and hazardous materials. A stable work area is required for use. Dirt, corrosives, and contaminants should be cleaned with water as necessary. Mild soap can be used if necessary, though a thorough rinse and dry is mandatory. Lightly lubricate all moving parts after cleaning. Never clean the trolley with corrosive substances. Always store your trolley where it will not be subjected to heat, light, excessive moisture, chemicals, or other elements.

Inspection

In order to maintain quality operation of the product, a regular inspection schedule should be followed by each operator. All inspections should be reported and maintained in a dated record log located at the end of this manual. You will notice that the first entry has been made as the trolley passed an inspection prior to leaving OZ Lifting Products headquarters. These records should be available to all personnel involved with the product and should be made available to OZ Lifting Products LLC® when a warranty issue is in question.

Operators should inspect trolley before each usage. Each **trolley** must pass an inspection by a qualified person every six months to remain in service. Inspect for wear, damage, cuts, cracks, corrosion, impact damage, pits, burrs, rough surfaces, sharp edges, rust, paint build-up, excessive heating, alteration, and missing or illegible labels. During any inspection, also test that the **trolley** functions smoothly and that the spindle threads are in good condition. If any problems are observed, the **trolley** should be placed out of service until it can be repaired. Use only OZ Lifting Products LLC® for replacement parts. The **trolley** should be taken annually to an authorized repair center for professional inspection.

Worker Classifications

Designated Person - The person who is selected or assigned as being competent to perform specific duties.

Qualified Person - The person that—by possession of a recognized degree or certificate of professional standing, or through extensive knowledge, training, and experience—has successfully demonstrated they are able to resolve problems relating to the subject matter and work.

Safety Warnings

Push Beam Trolley (Personal Fall Protection Usage)

- Do Not** use any trolley that has not passed inspection by a qualified person within the past six months.
- Do Not** alter or misuse equipment.
- Do Not** use in a non-compliant manner.
- Do Not** operate in a workplace that has not been assessed for proper use.
- Do Not** purchase used personal fall arrest systems.
- Do Not** use non-compliant harnesses and connectors.
- Do Not** operate without a rescue procedure in place.
- Do Not** use to hang, lift, support, or to hoist tools or equipment.
- Do Not** use without records of proper inspection.
- Do Not** use trolley as an anchor point for more than one personal fall arrest system.

Push Beam Trolley (Material Handling Usage)

- Do Not** lift more than the designated load range.
- Do Not** lift people or lift loads over people.
- Do Not** operate a damaged or malfunctioning product.
- Do Not** remove, deface, or cover warning labels.
- Do Not** operate until personnel are warned and cleared from the area.
- Do Not** use if load is not suspended vertically.
- Do Not** use trolley without locking firmly in place.
- Do Not** use trolley as a welding ground.
- Do Not** add lengthening pieces to the beam clamp lever.
- Do Not** weld on the lifted load.
- Do Not** open the trolley when it is holding a load.
- Do Not** use trolley in corrosive environments.
- Do Not** use connections between the trolley and load.
- Do Not** allow the load to swing.



WARNING: Failure to read and comply with these safety warnings may result in a hazardous situation that could lead to death, serious injury, or property damage.



P.O. Box 845, Winona, MN 55987

Distributed by
Engineered Fall Protection
sales@engineeredfallprotection.com
www.engineeredfallprotection.com
Tel: (314) 492-4422