



# HEARTLAND

## STEEL PRODUCTS

### Product Information Sheet - Safety Rail

#### PRODUCT OVERVIEW

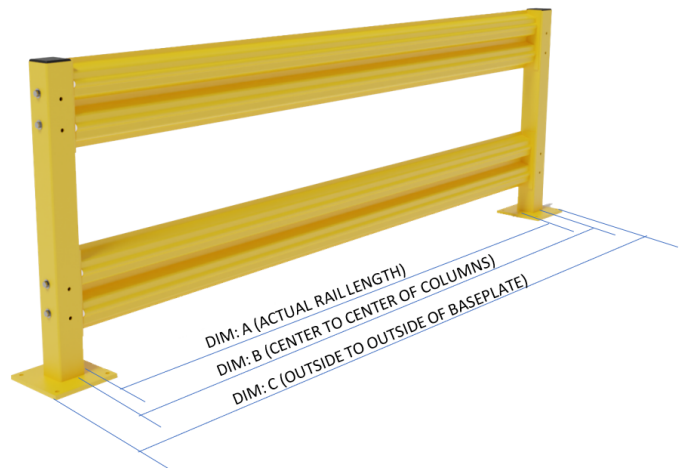
Protection for structural platforms, in-plant offices, conveyors, water mains, valuable equipment, and personnel. Easy to install with all the hardware provided with the columns. Able to withstand an impact of a 10,000 lb. load at a 5-mph rating. Custom 1" length increments upon request

#### PRODUCT SPECIFICATIONS:

- Protection for structural platforms, in-plant offices, conveyors, water mains, valuable equipment & personnel.
- Easy installation with all hardware included with columns.
- 10,000 lb. load at 5 mph rating.
- Bright OSHA yellow powder coat finish.
- Columns are 4" square high strength steel tube.
- Baseplate is 8" square x 1/2" thick steel, and can be offset if needed.
- Rails are 11 gauge high-tensile steel formed into a two rib corrugated design with two secondary ribs.
- 1/2" x 5" screw anchors and 1/2" connection hardware is provided.

#### PART NUMBERS

RAIL	DIM: A	DIM: B	DIM: C
R2	20"	24"	32"
R3	32"	36"	44"
R4	44"	48"	56"
R5	56"	60"	68"
R6	68"	72"	80"
R7	80"	84"	92"
R8	92"	96"	104"
R9	104"	108"	116"
R10	116"	120"	128"



\*Quick ship product - ships within 3-5 business days

Rev July 2023





# HEARTLAND

## STEEL PRODUCTS

### Product Information Sheet - Columns (C1 & C2)

#### PRODUCT OVERVIEW

Columns and rails (sold separately) are designed for structural platforms, in-plant offices, conveyors, water mains, valuable equipment, and personal safety.

#### PRODUCT SPECIFICATIONS

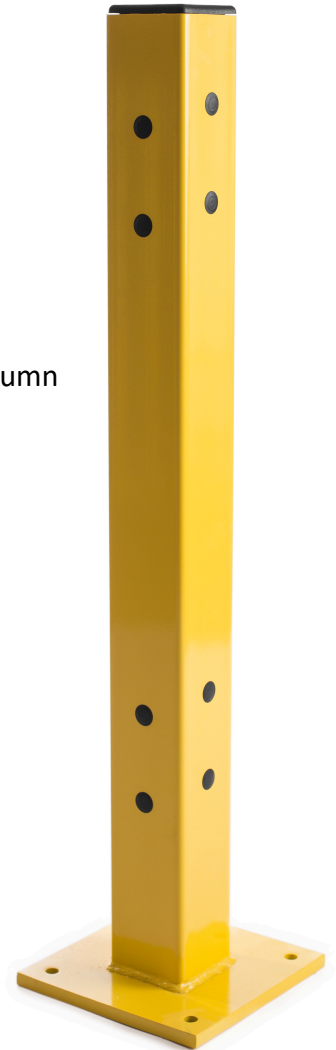
- Quick Ship Program-ships in 3-5 business days.
- Easy installation with all hardware included with columns.
- 10,000 lb. load at 5 mph rating.
- Bright OSHA yellow powder coat finish.
- Columns are 4" square high strength steel tube.
- Baseplate is 8" square x 1/2" thick steel, and can be offset if needed.
- 1/2" x 5" screw anchors and 1/2" connection hardware is provided.

Model #	Description
C1	18" Column-Single Rail Application
C2	42" Column-Double Rail Application

C1 Column



C2 Column



Rev Oct 2023





# HEARTLAND

## STEEL PRODUCTS

## Product Information Sheet - High Protection Safety Rail

Provides protection of assets & personnel in hazardous areas of high product storage. Designed to minimize losses due to the toppling of highly stacked materials, into adjacent pedestrian traffic areas.

### PRODUCT HIGHLIGHTS

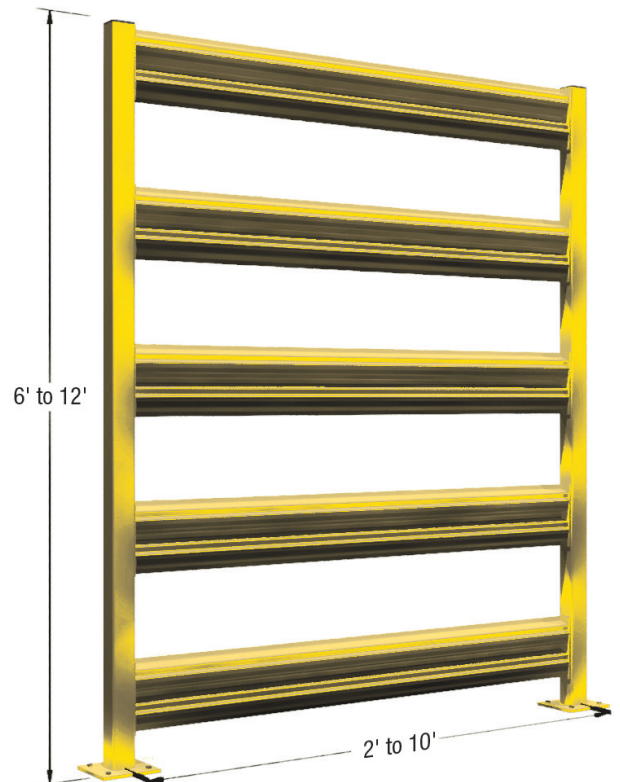
- System withstands a 3,300 lb. static weight load.
- Rated for 10,000 lb. impact at 5 mph.
- Baseplate can be offset if needed.
- Simple installation, hardware included with columns.
- Special lengths in 1" increments available upon request.

### PRODUCT SPECIFICATIONS

- Columns are 4" square high strength steel tube.
- Baseplate is 8" square x 1/2" thick steel.
- Rails are 11 gauge high-tensile steel formed into a two rib corrugated design with two secondary ribs.
- 1/2" x 5" screw anchors and 1/2" connection hardware provided.
- Bright OSHA Yellow.

### PART NUMBERS

MODEL #	DESCRIPTION
C3	72" Column-3 Rail Application
C4	84" Column-4 Rail Application
C4	96" Column-4 Rail Application
C5	108" Column-5 Rail Application
C5	120" Column-5 Rail Application
C8	144" Column-8 Rail Application
R10	Rail for 10' section
R9	Rail for 9' section
R8	Rail for 8' section
R7	Rail for 7' section
R6	Rail for 6' section
R5	Rail for 5' section
R4	Rail for 4' section
R3	Rail for 3' section
R2	Rail for 2' section

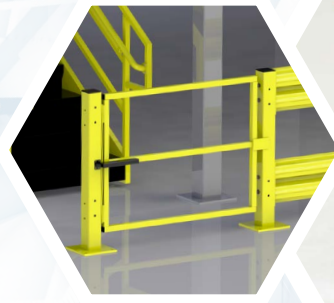


Dec 2023





**HEARTLAND**  
ENGINEERED PRODUCTS



# CHOOSE FROM SWING, SLIDE OR PIVOT GATE STYLES.

All HEP gates offer:

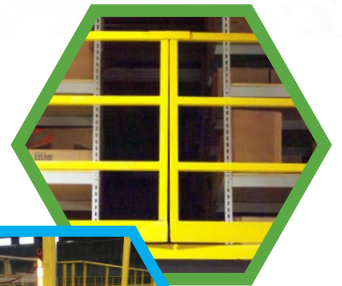
- Design to meet any applicable standards and codes
- Standard safety yellow finish
- A range of widths to suit your application
- All hardware included—no field welding required
- Solid, balanced designs to allow easy operation

## SWING GATES

- Bi-parting gate equipped with rollers and locking hasp
- Available in 4', 5', 6' and 8' lengths
- Designed to be used with standard 3-rail or 2-rail handrail
- Constructed of 1-1/2" square tubing
- Spring loaded to swing inward for added safety
- Locking hasp and kick plate included
- Impact plates available as needed

## SAFETY SWING GATES

- Designed to be used with standard 2-rail safety handrail system
- Adjustable closing speed and hold-open feature
- Universal mounting for left or right hand to push in or out
- Tested to more than 100,000 cycles





MODEL	DESCRIPTION	WEIGHT (LBS)
GT03	3' standard swing gate	41
GT04	4' standard swing gate	42
C2	42" high dual column	529

## SLIDE GATES

- Equipped with rollers and locking hasp
- Available in 4', 5' and 6' lengths
- Constructed of 1-1/2" square tubing
- Designed to be used with standard 3-rail or 2-rail handrail

## PIVOT GATES

- When one side opens, the other is closed
- Available in sizes from 5'-1" to 10' wide for single and double drop pallet applications
- Constructed of 1-1/2" square tubing

---

**GET A QUOTE NOW** > [Sales@EngineeredFallProtection.com](mailto:Sales@EngineeredFallProtection.com) | (314) 492-4422

---



**HEARTLAND**  
STEEL PRODUCTS

## LIFT OUT SAFETY RAIL

- All Lift Out parts are made to order.
- Easy access to electrical panels, dock areas, machinery and utilities.
- Easy installation with anchors included with columns.
- 5,000 lb. load at 4 mph rating.
- Bright OSHA yellow powder coated finish.
- The Lift Out rails are constructed differently than our standard bolt on rails.
- Lift Out brackets are welded to the column. The column layout must be specified, end, middle, corner or continuous (Lift Out rail on one side and bolt on rail on the opposite side).
- Columns are 4" square high strength steel tube.
- Baseplate is 10" square x 5/8" thick steel, and can be offset if needed.
- Rails are 11 gauge high-tensile steel formed into a two rib corrugated design with two secondary ribs.
- Special / Custom lengths available in 1" increments. Consult factory for additional lead-time & costs.

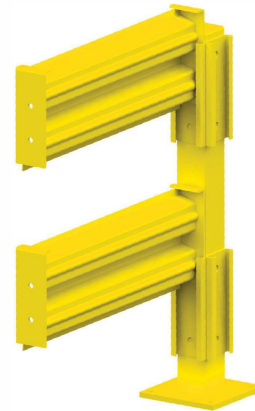


### MODEL # DESCRIPTION

C1LOEND	18" Single Rail Column Lift Out End
C1LOMID	18" Single Rail Column Lift Out Middle
C1LOCNR	18" Single Rail Column Lift Out Corner
C1LOCON	18" Single Rail Column Lift Out Continuous
C2LOEND	42" Dual Rail Column Lift Out End
C2LOMID	42" Dual Rail Column Lift Out Middle
C2LOCNR	42" Dual Rail Column Lift Out Corner
C2LOCON	42" Dual Rail Column Lift Out Continuous

### MODEL # DESCRIPTION

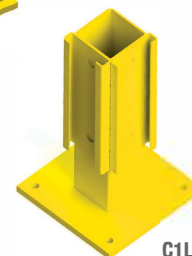
RL010	10' Lift Out Rail
RL09	9' Lift Out Rail
RL08	8' Lift Out Rail
RL07	7' Lift Out Rail
RL06	6' Lift Out Rail
RL05	5' Lift Out Rail
RL04	4' Lift Out Rail
RL03	3' Lift Out Rail
RL02	2' Lift Out Rail



C3 version not available in Lift Out design



C1LOMID



C1LOCNR



C1LOEND