

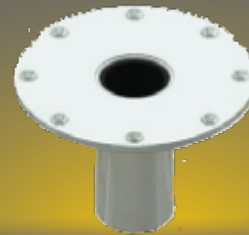


SHOWN:
PART #TB30031
FLOOR MOUNT BASE

DESCRIPTION:

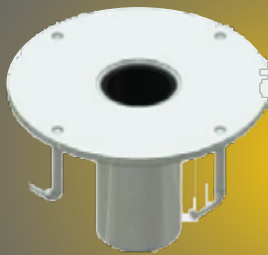
Tuff Built's Pro-Series Permanent davit bases are designed for permanent installations at locations where repeated or frequent use is required. Permanent bases are available in a variety of designs, finishes, and materials to meet your specific requirements. Custom Permanent Bases can be designed to meet your specific application requirements.

Please call us for more information.



FLUSH MOUNT FLOOR BASES™

BASE TYPE:	MATERIAL:	FINISH:	PART #:	WEIGHT:	BASE TYPE:	MATERIAL:	FINISH:	PART #:	WEIGHT:
Base, Core Mount	Mild Steel	CS-500	30062	6.5 lbs (2.9 kgs)	Base, Flush Mount (Existing Concrete)	Mild Steel	CS-500	30021	17.1 lbs (7.8 kgs)
	Mild Steel	Hot Dip Galvanized	30061	6.5 lbs (2.9 kgs)		Mild Steel	Hot Dip Galvanized	30018	17.1 lbs (7.8 kgs)
	304 SS	Sandblasted	30063	7.8 lbs (3.5 kgs)		304 SS	Sandblasted	30022	18.7 lbs (7.8 kgs)
	316 SS	Sandblasted	30064	7.8 lbs (3.5 kgs)		316 SS	Sandblasted	30038	18.7 lbs (7.8 kgs)



FLUSH MOUNT FLOOR BASES

BASE TYPE:	MATERIAL:	FINISH:	PART #:	WEIGHT:
Base, Flush Floor Mount (Fresh Concrete)	Mild Steel	CS-500	30023	18.5 lbs (8.4 kgs)
	Mild Steel	Hot Dip Galvanized	30043	18.5 lbs (8.4 kgs)
	304 SS	Sandblasted	30024	20.1 lbs (9.2 kgs)
	316 SS	Sandblasted	30039	20.1 lbs (9.2 kgs)



WALL MOUNT BASES

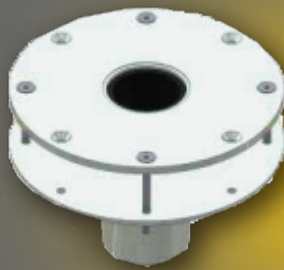
BASE TYPE:	MATERIAL:	FINISH:	PART #:	WEIGHT:	BASE TYPE:	MATERIAL:	FINISH:	PART #:	WEIGHT:
Base, 3 Point Wall Mount	Mild Steel	CS-500	30037	9 lbs (4.1 kgs)	Base, 4 Point Wall Mount	Mild Steel	CS-500	30032	10.3 lbs (4.7 kgs)
	Mild Steel	Hot Dip Galvanized	30052	9 lbs (4.1 kgs)		Mild Steel	Hot Dip Galvanized	30054	10.3 lbs (4.7 kgs)
	304 SS	Sandblasted	30051	10.4 lbs (4.8 kgs)		304 SS	Sandblasted	30033	11.9 lbs (5.4 kgs)
	316 SS	Sandblasted	30049	10.4 lbs (4.8 kgs)		316 SS	Sandblasted	30053	11.9 lbs (5.4 kgs)



CORNER MOUNT BASES

BASE TYPE:	MATERIAL:	FINISH:	PART #:	WEIGHT:
Base, Corner Mount 8" (Concrete Mount)	Mild Steel	CS-500	30350	32.3 lbs (14.7 kgs)
	Mild Steel	Hot Dip Galvanized	30351	32.3 lbs (14.7 kgs)
	304 SS	Sandblasted	30352	34.6 lbs (15.8 kgs)
	316 SS	Sandblasted	30053	34.6 lbs (15.8 kgs)

BASE TYPE:	MATERIAL:	FINISH:	PART #:	WEIGHT:
Base, Corner Mount 8" (Steel Mount)	Mild Steel	CS-500	30246	11.8 lbs (5.8 kgs)
	Mild Steel	Hot Dip Galvanized	30257	11.8 lbs (5.8 kgs)
	304 SS	Sandblasted	30258	13.8 lbs (6.2 kgs)
	316 SS	Sandblasted	30259	13.8 lbs (6.2 kgs)

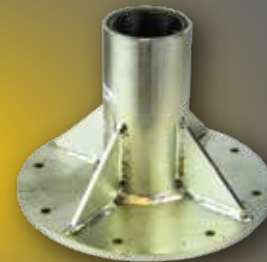


DECK MOUNT BASES

BASE TYPE:	MATERIAL:	FINISH:	PART #:	WEIGHT:
Base, Deck Mount	Mild Steel	CS-500	30080	24.3 lbs (10.9 kgs)
	Mild Steel	Hot Dip Galvanized	30081	24.3 lbs (10.9 kgs)
	304 SS	Sandblasted	30082	26.0 lbs (11.7 kgs)
	316 SS	Sandblasted	30083	26.0 lbs (11.7 kgs)

FLOOR MOUNT BASES

BASE TYPE:	MATERIAL:	FINISH:	PART #:	WEIGHT:
Base, Floor Mount	Mild Steel	CS-500	30031	19.8 lbs (8.9 kgs)
	Mild Steel	Hot Dip Galvanized	30048	19.8 lbs (8.9 kgs)
	304 SS	Sandblasted	30030	21.8 lbs (9.9 kgs)
	316 SS	Sandblasted	30047	21.8 lbs (9.9 kgs)



SLEEVE CAPS



BASE TYPE:	MATERIAL:	FINISH:	PART #:	WEIGHT:
Cap, Base	Mild Steel	CS-500	30019	1.11 lbs (.51 kgs)
	304 SS	Sandblasted	30069	1.13 lbs (.52 kgs)