

Variety:

Tuff Built's Pro-Series Davits are available in a wide variety of heights and reaches, with features ranging from basic position jobs to fully rotational and adjustable davit arms for multiple applications.

28" REACH

**TUFF-KLIK
PINLESS ADJUSTMENT**

ONLY 129 LBS.

HEIGHT: 84"

- Features "Tuff-Klik" pin-less adjustment
- Fold up for easy moving and storage
- Easy to set fall brake system
- Ability to mount mechanical devices from front and rear

DESCRIPTION:

Pro-3 Hoist System, Davit 28R-84H (Upper & Lower Mast) w/Portable Base (6pc), Winch & Winch Bracket

**SHOWN:
PART #TB20035**

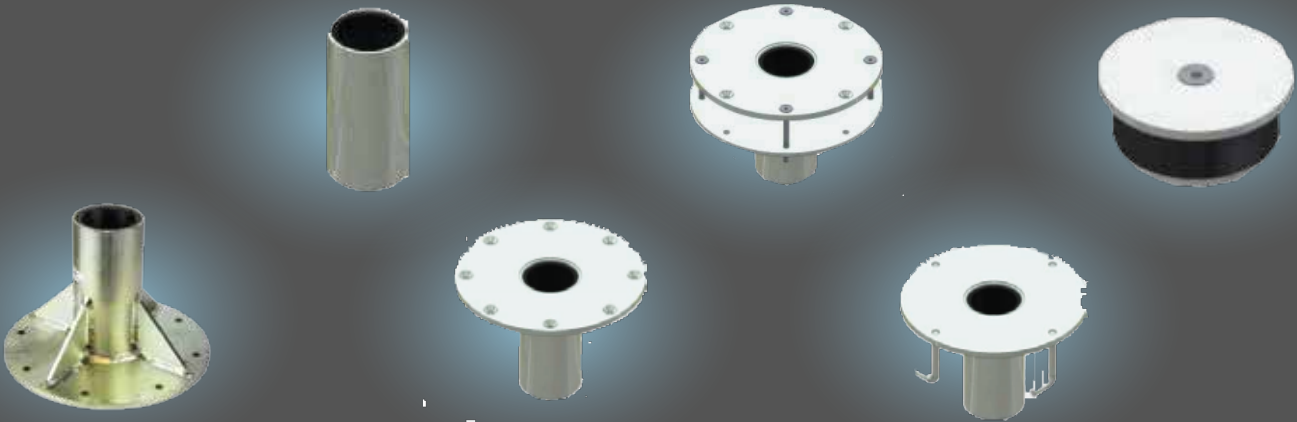


ANALOG DAVITS

PART #:	MODEL:	REACH:	HEIGHT:	WINCH MTG:	WEIGHT:
TB30095	Analog Series Davit, 48R- 168H	48" (122cm)	168" (427cm)	Anchor Point	93 lbs (42 kgs)
TB50015	Analog Series Davit, 48R- 84H	48" (122cm)	168" (427cm)	Rear	105 lbs (48 kgs)

Pro-2 Series use "Tuff-Klik Structure Bracket #7" Pt#60142 for Device Mounting

Configure your system with a variety of heights, offsets, anchor points, and pullies.
Analog Davits are designed for an ultimate strength of 5000 Lbs (22.2kN)



PERMANENT BASES

FINISH:	CORE MOUNT:	FLUSH FLOOR MOUNT (EXISTING CONCRETE)	FLUSH FLOOR MOUNT (FRESH CONCRETE)	FLOOR MOUNT:	DECK MOUNT:	CAP:
CS-500 (Mild Steel)	TB30062	TB30021	TB30071	TB30071	TB30071	TB30071
Hot Dip Galvanized (Mild Steel)	TB30061	TB30018	TB30072	TB30072	TB30072	TB30072
304 SS	TB30063	TB30022	TB30073	TB30073	TB30073	TB30073
316 SS	TB30064	TB30038	TB30093	TB30093	TB30093	TB30093

PRO-1 SERIES DAVITS

PART #:	MODEL:	REACH:	HEIGHT:	WINCH/SRL MOUNT:	WEIGHT:
TB30015	Pro-1 Davit w/ Pulley	19" (48cm)	73" (185cm)	Top	18.5 lbs (8.4 kgs)
TB30016	Pro-1 Plus Davit w/ Pulley's	19" (48cm)	58" (147cm)	Rear	17 lbs (7.7 kgs)
TB30094	Pro-1 Davit w/ Anchor Point	22" (56cm)	72" (183cm)	Top	17 lbs (7.7 kgs)
TB30097	Pro-1 Mast Extension	---	30" (76cm)	---	9.3 lbs (4.2 kgs)

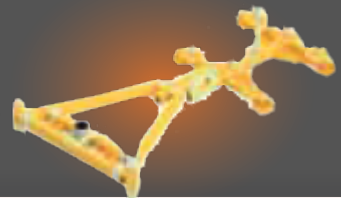
Pro-1 Series Davits use "Tuff-Klik Structure Bracket #5" Pt#60140 for Device Mounting

PRO-2 SERIES DAVITS

PART #:	MODEL:	REACH:	HEIGHT:	WINCH/SRL MOUNT:	WEIGHT:
TB30055	Pro-2 Davit, 22R-74H (1 piece)	22" (56cm)	74" (188cm)	Rear	32 lbs (14.5 kgs)
TB30116	Pro-2 Davit, 22R-97H (1 piece)	22" (56cm)	97" (247cm)	Rear	35 lbs (15.8 kgs)
TB30174	Pro-2 Davit, 22R-117H (2 piece)	22" (56cm)	177" (297cm)	Rear	55 lbs (24.9 kgs)
TB30056	Pro-2 Davit, 22R-137H (2 piece)	22" (56cm)	137" (328cm)	Rear	56 lbs (25.4 kgs)
TB30122	Anchor Point for Pro-2 Davits	---	---	---	1.4 lbs (0.7 kgs)

Pro-2 Series use "Tuff-Klik Structure Bracket #7" Pt#60142 for Device Mounting

The Pro-1 and Pro 2 Series Davits are designed to be small and lightweight, while at the same time being strong, reliable, and providing economical packages. The Pro-1 Series Davits also FOLD UP for easy moving and storage.



PRO-2 SERIES BASES

PART #:	MODEL:	WEIGHT:
TB30071	Pro-2 Plus Base, Hitch Mount	62 lbs(28.kgs)
TB30072	Pro-2 Base, Bridge Barrier	65 lbs(29.5kgs)
TB30073	Pro-2 Base, Counterweight	118 lbs(53.5kgs)
TB30093	Pro-2 Base, Hitch Mount	54 lbs(24.5kgs)



PART #30231

PRO-3 SERIES DAVITS

PART #:	MODEL:	REACH:	HEIGHT:	WINCH/SRL MOUNT:	WEIGHT:
TB30104	Pro-3 Davit, 28R-54H Upper	19.5"-29" (50-74cm)	46"-55.8" (117-142cm)	Rear/Front	21 lbs (9.5 kgs)
TB30105	Pro-3 Davit, 28R-66H Upper	19.5"-29" (50-74cm)	58"-66.8" (147-170cm)	Rear/Front	25 lbs (11.4 kgs)
TB30106	Pro-3 Davit, 28R-84H	19.5"-29" (50-74cm)	76.5"-85.5" (194-217cm)	Rear/Front	31 lbs (14.1 kgs)
TB30107	Pro-3 Davit, 28R-108H	19.5"-29" (50-74cm)	99.8"-108.5" (253-275cm)	Rear/Front	32 lbs (14.5 kgs)
TB30108	Pro-3 Davit, 40" Lower Mast	---	40" (102cm)	---	12 lbs (5.4 kgs)
TB30109	Pro-3 Davit, 52" Lower Mast	---	52" (132cm)	---	16 lbs (7.3 kgs)
TB30231	Pro-3 HD Davit, 42R-100H	33"-42" (84-107cm)	91"-100" (231-254cm)	Rear/Front	50 lbs (22.7 kgs)
TB30178	Anchor Point for Pro-3 Davits	---	---	---	0.45 lbs (0.20 kgs)
TB30175	Single Re-Direct Pulley	---	---	---	1.12 lbs (0.54 kgs)

(REFERENCE TB20035 PHOTO ON FRONT)

PRO-3 SERIES PACKAGES

PART #:	PACKAGE CONTAINS:	REACH:	HEIGHT:	UPPER DAVIT:	LOWER MAST:	BASE:	WINCH:	STRUCTURE BRACKET:	WEIGHT:
TB20035	Pro-3 Hoist System, Davit 28R-84H (Upper & Lower Mast) w/Portable Base (6pc), Winch & Winch Bracket	19" (50cm)	19" (50cm)	TB30104	TB30108	TB30070	TB60217	TB60141	129 lbs (59 kgs)
TB20036	Pro-3 Hoist System, Davit 28R-84H (1pc Mast) w/Portable Base (5pc), Winch & Winch Bracket	19" (50cm)	19" (50cm)	TB30106	---	TB30070	TB60217	TB60141	129 lbs (59 kgs)
TB20037	Pro-3 Hoist System, Davit 28R-108H (Upper & Lower Mast) w/Portable Base (6pc), Winch & Winch Bracket	19" (50cm)	19" (50cm)	TB30105	TB30109	TB30070	TB60217	TB60141	135 lbs (62 kgs)
TB20038	Pro-3 Hoist System, Davit 28R-108H (1pc Mast) w/Portable Base (5pc), Winch & Winch Bracket	19" (50cm)	19" (50cm)	TB30107	---	TB30070	TB60217	TB60141	129 lbs (59 kgs)
TB20113	Pro-3 Hoist System, Davit 28R-84H (Upper & Lower Mast) w/Portable Base (6pc)	19" (50cm)	19" (50cm)	TB30104	TB30108	TB30070	---	---	89 lbs (41 kgs)
TB20080	Pro-3 HD Hoist System, Davit 42R-100H(1pc Mast) w/Portable Base (5pc), Winch & Winch Bracket	19" (50cm)	19" (50cm)	TB30231	---	TB30115	TB60217	TB60142	170 lbs (77 kgs)
TB20092	Pro-3 Hoist System, Davit 28R-54H (Upper & Lower Mast) w/Portable Base (3pc)	33" (84cm)	33" (84cm)	TB30104	TB30108	TB30070	---	---	98 lbs (45 kgs)
TB20136	Pro-3 HD Hoist System, Davit 42R-100H(1pc Mast) w/Portable Base (5pc)	19" (50cm)	19" (50cm)	TB30231	---	TB30115	---	---	130 lbs (59 kgs)