



**PROVIDING ENGINEERING, SALES & MANUFACTURING,
INSTALLS & INSPECTIONS FOR YOUR**

RAILCAR TERMINALS
TRANSPORTATION MAINTENANCE
TRUCK LOADING BAYS
AIRPLANE HANGERS
ROOFTOP



Featuring full systems, harnesses and connectors, we have all the protection checks you need

OSHA and ANSI state that equipment must be inspected at a minimum before each use, after a fall event, and annually. The after a fall event and annual inspections must be conducted by a competent person who is not the user.

EFP Inspects all certified fall protection systems, including:

- **RIGID RAIL TROLLEY SYSTEMS**
- **CABLE WIRE ROPE SYSTEMS - Overhead & Rooftop**
- **ROOFTOP ANCHOR PULL TESTING**
- **PPE EQUIPMENT**
- **PORTABLE SYSTEMS**



HARNESSES



LANYARDS



TIE-OFF ADAPTERS



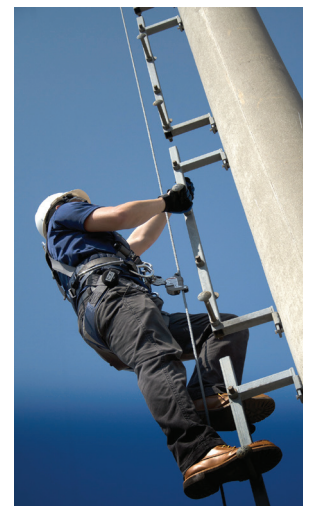
CABLE GRABS



ANCHORS



SRL'S



GUARDRAILS & ACCESS PLATFORMS

Customizable guardrails and fall protection offer peace of mind to your employees and service technicians.



SAFETY
GUARDRAILS



- HEAVY INDUSTRIAL GUARDRAILS
- PASSIVE FALL PROTECTION
- SAFETY GUARD HANDRAILS

Safe and portable platforms for your industrial loading needs



PORTABLE ACCESS
PLATFORMS

- RAILCAR LOADING RACKS
- REMOVABLE INSTA-RACK PLATFORMS
- PORTABLE ACCESS PLATFORMS



ENGINEERED FALL PROTECTION
A TRI-STATE EQUIPMENT COMPANY

GORBEL
A CLASS ABOVE

3M



GREEN

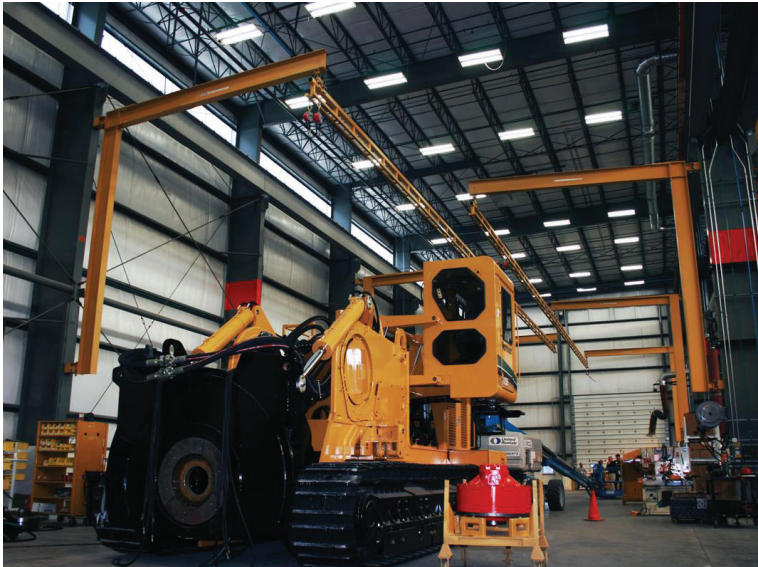
GUARDIAN
FALL PROTECTION

PROTECTA

SALA

MALTA DYNAMICS

TEL 314-492-4422 | FAX 800-570-5584 | sales@engineeredfallprotection.com | engineeredfallprotection.com



INDOOR & OUTDOOR SYSTEMS

Horizontal and vertical lifelines customizable for your workspace

EFP provides reliable and cost-effective overhead fall protection and reduce the risk of injury in elevated work environments. Choose between our ceiling-mounted or our freestanding systems to find the solution that's right for your facility.

Multiple workers have free range of motion along the entire workspace as the anchor point stays on a vertical plane to decrease free fall distance and swing fall.

Vertical Ladder Lifelines allow for handsfree movement up and down the entire height of the fixed ladder, eliminating the need to disconnect and find new tie-off points while ascending or descending the ladder.

ABOVE: Foldaway system. Deploy as needed then fold away when done. Great for work cells with overhead cranes.
RIGHT: Ceiling mounted system. Provides fall protection when floor space is limited. Mounts to ceiling with low profile design.





ROOFTOP SYSTEMS

Designed, engineered and installed to fit your application

EFP provides sales, installation and inspection services. We offer OSHA compliant solutions to address all of your penetrating and non-penetrating rooftop safety needs.

GUARDRAIL



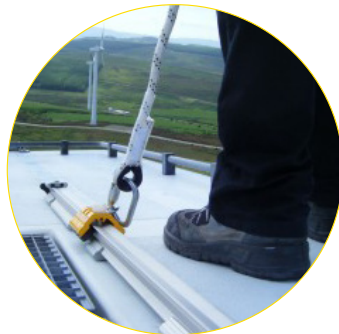
Versatile free-standing, non-penetrating modular design

ROOFTOP CABLE HLL



Galvanized or stainless steel available in a wide range of sizes and styles

ROOFTOP RIGID HLL



OSHA compliant solutions

PORTABLE SYSTEMS

A Frame, C Frame, Counter Weight & Over the Road Systems offer versatile and reliable fall protection for any environment



The A-Frame System provides a secure anchor point on a portable structure to give workers increased coverage and protection.

The C Frame is designed to be moved manually or with the use of a tow bar and service vehicle. Fixed and adjustable height options available as well as pre-configured and fully customizable designs.



Portable jib solutions for indoor and outdoor maintenance where mobility and worker safety are key. These systems incorporate a 360° rotating jib with the capacity to provide fall protection for one person.

Towable fall protection, necessary anchorage right where you need it! Mobile units for use when maintaining aircraft, railroad cars, industrial equipment, or heavy machinery. Allow for easy highway towing and transport around the job site.

